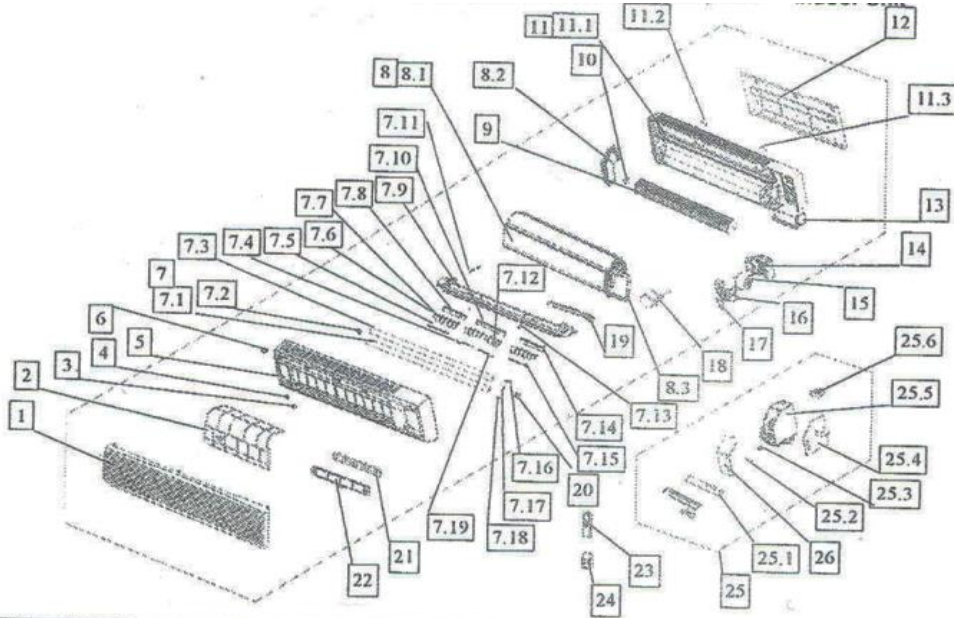


## Exploded View Parts for Model: MCA18 220~230V, 60Hz

### Indoor Unit

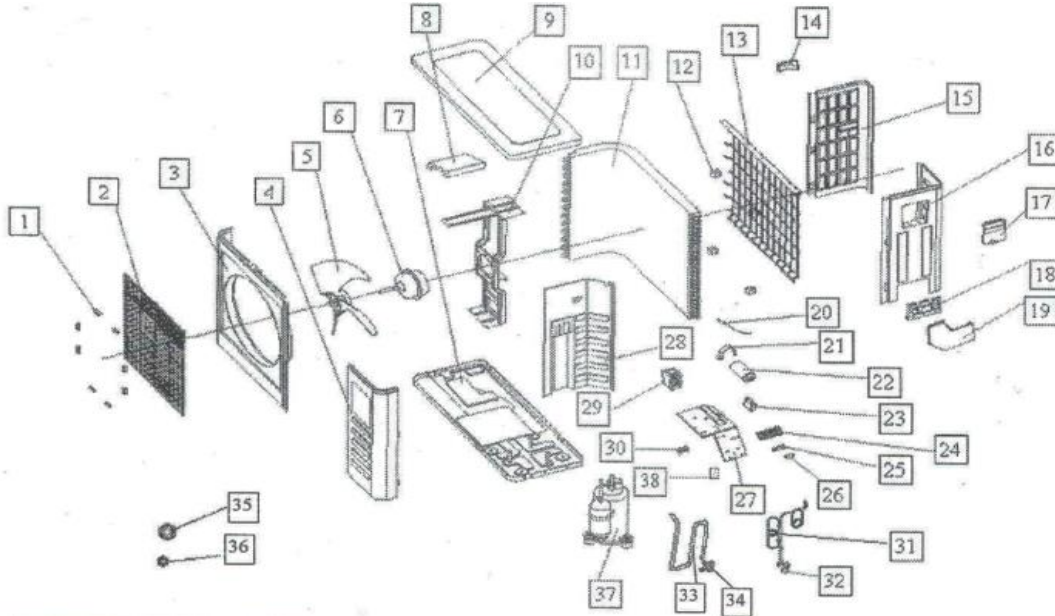


No.	Part Name	No.	Part Name
1	Front Panel	7.18	Swing Bar for Down Horizontal Louver
2	Air Filter	7.19	Louver Connector, Middle-Right
3	Screw Cap	8	Evaporator Ass'y
4	Down Clap for Panel Frame	8.1	Evaporator I
5	Panel Frame		Evaporator II
6	Up Clap for Panel Frame		Evaporator III
7	Air Out Frame Ass'y		Evaporator IV
7.1	Horizontal Louver, Down	8.2	Right Holder for Evaporator
7.2	Left Bush for Horizontal Louver		Left Holder for Evaporator
7.3	Horizontal Louver, Up	8.3	Input Pipe for Evaporator
7.4	Louver Connector, Middle-Left		Output Pipe for Evaporator
7.5	Louver Connector, Left	9	Cross Flow Fan, Ass'y
7.6	Vertical Louver, Small Size	10	Bearing Holder
7.7	Vertical Louver, Large Size	11	Chassis Ass'y
7.8	Louver Holder, Left	11.1	Chassis
7.9	Air Out Frame	11.2	Left Rear Cover for Chassis
7.10	Louver Holder, Middle	11.3	Right Rear Cover for Chassis
7.11	Stoppie	12	Installation Plate
7.12	Vertical Louver, Middle Size	13	Corner Board for Chassis
7.13	Bush	14	Base for Motor
7.14	Louver Holder, Right	15	Fan Motor
7.15	Louver Connector, Right	16	Cover for Motor
7.16	Swing Bar for Up Horizontal Louver	17	Small Cover for Motor
7.17	Connector for Horizontal Louver	18	Waterproof Board

19	Drain Hose
20	Louver Motor
21	Air Cleaner
22	Air Cleaner Holder
23	Remote Controller
24	Holder for Remote Controller
25	E-Parts Ass'y
25.1	Display Board
25.2	Wire Joint, 4p
25.3	Wire Clamp
25.4	Main Control Board
25.5	E-Parts Box
25.6	Transformer
25.7	Indoor Temp Sensor
25.8	Evaporator Temp Sensor
26	E-Part Box Cover
27	Bottom Cover for E-Box
28	Clamp for Temp Sensor
29	Protector for Temp Sensor
30	Copper Nut, GLM-C03
31	Copper Nut, GLM-A01

## Exploded View Parts for Model: MCA18 220~230V, 60Hz

### Outdoor Unit



No.	Part Name	No.	Part Name
1	Clamp for Front Net	27	E-Parts Instalation Box
2	Front Net	28	Separating Board
3	Front Clapboard	29	Contactora
4	Front Right Clapboard	30	Wire Joint for Multiplexer
5	Propeller Fan	31	High Pressure Valve Ass'y
6	Fan Motor	32	Liquid Pipe Valve
7	Chassis	33	Low Pressure Valve Ass'y
8	Foam over Holder for Moter	34	Gas Pipe Valve
9	Cover	35	Copper Nut, TLM-A01
10	Holder for Fan Motor	36	Copper Nut, TLM-C03
11	Condenser	37	Compressor
13	Rear Net	38	Outdoor Main Control Board
14	Small Handle		
15	Left Clapboard		
16	Rear Right Clapboard		
17	Big Handle		
18	Instalation Plate for Valves		
19	Water Collector		
21	Capacitor Clamp		
22	Compressor Capacitor		
23	Fan Motor Capacitor		
24	Wire Joint		
25	Washer for Wire Joint		
26	Clamp for Wiring		